



\$297,821

Lot 939, Amphion View

Lot Size: 359m² – 11.3m Frontage

\$154'321 home price

\$117'000 land price

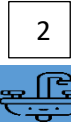
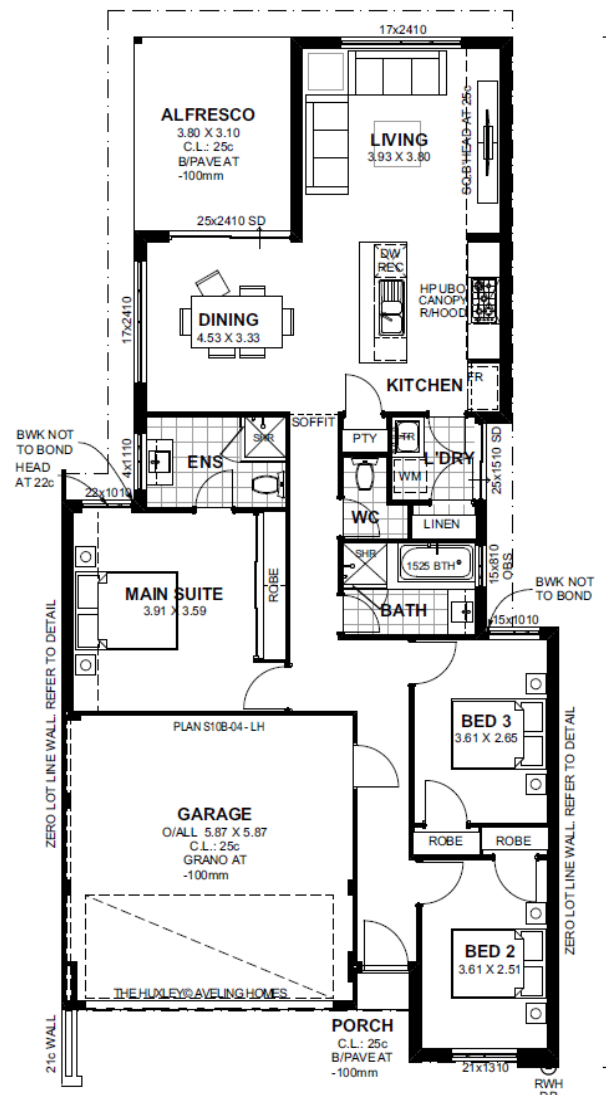
\$26'500 siteworks allowance

Ravenswood Green Estate

- Appearing to be nestled along the banks of the Murray River, Ravenswood Green Private Estate offers a tranquil and picturesque place to call home. Surrounded by 26.8 hectares of natural beauty, you'll get the best of country-style living while enjoying city-style conveniences. It is in close proximity to many attractions. These include a range of shopping centres, restaurants and all of the lures of nearby Mandurah

As well as the hugely impressive Aveling Specification, you also get these bonus inclusions:

- Reverse cycle Air-Con
- Acrylic render to front elevation
- Wood look vinyl flooring and premium builders carpets
- Quality Blinds
- 900mm Appliances Inc. Cooktop, Oven and Rangehood
- Semi frameless showers
- Laundry fit out as per Lakelands display home
- Stunning kitchen & more!!!



The Huxley Design

David Redfern Cross | 0402 688468 | davidcross@avelinghomes.com.au

Disclaimer: Photographs on this page may depict fixtures, finished and features not supplied by Aveling Homes and not included in the pricing specified. These may include furniture, floor coverings, window treatments and landscaping items, such as planter boxes, retaining walls, water features and items such as fencing and barbecues. Accordingly any pricing specified does not include these items unless otherwise stated. Site works costs are estimated to the best of our ability; however this may fluctuate once the site has been surveyed. The land component is not owned by Aveling Homes; however we have been provided authority by the Owner. At the time of printing 08/06/2019 the price was correct and the land available for sale. *Terms & conditions apply. Aveling Homes Pty Ltd

