

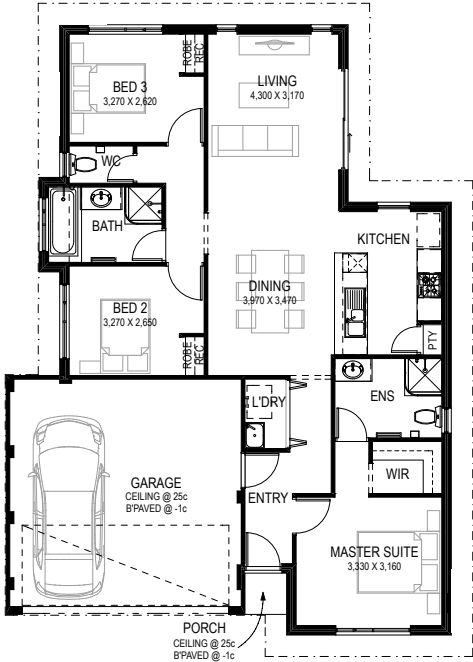
# The Point



TOTAL AREA <b>135m<sup>2</sup></b>	 BED <b>3</b>	 BATH <b>2</b>	 CAR SPACE <b>2</b>
---------------------------------------	---------------------	----------------------	---------------------------

## Our exclusive package includes:

- Commodore Homes is 100% WA-owned and operated, and with BGC have been, quite literally, building WA for over 50 years
- Your new Commodore Home is backed by the might of Australia's largest residential builder, BGC, to guarantee your peace of mind.
- Nothing compares to Commodore Homes!
- Brick for brick, Commodore Homes is unbeatable per square metre. Calculate The Rate and see for yourself!
- Enjoy Low Deposit and Zero Dollars upfront finance options, so no matter your circumstances Commodore Homes has a finance solution to fit thanks to our Loan Co Experts.
- We're so confident in the quality of our product, we guarantee our service and construction timeframes!



M:  
E:



NOTHING COMPARES

Visit [commodorehomes.com.au](http://commodorehomes.com.au)

\* See website and specific package for full terms and conditions. Price correct at time of printing. Images and landscaping are for illustrative purposes. Commodore Homes is not the owner of the land. The land is advertised by agreement between Commodore Homes and the land developer and/or vendor. Advertised price does not take include transfer duty, settlement costs and other settlement of the land fees. Provisional sum for site works included in price. BC 9769.